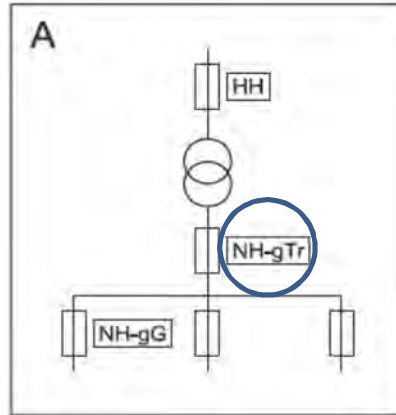


HHD Applications

Protection of Transformers
Type A

Recommendation for the protection of transformer mains with HHD fuses according to DIN standard, DIN VDE 0670 part 402 using LV fuses operating gTr on the low voltage side.

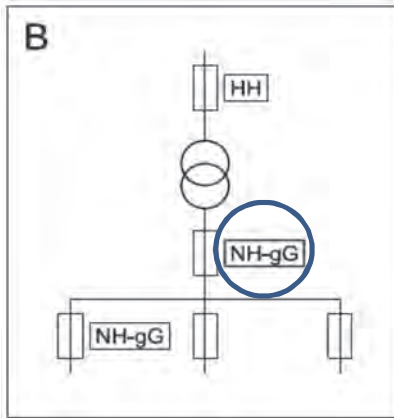


		HV Fuse Selection Guide				
		System Voltage(Line - Line) [kV]				
Transformer Rating		6 - 7.2	10 - 12	20 - 24	30 - 36	Secondary Fusing with NH - gTr
		Rated Current of Fuse				
[kVA]	[A]	[A]	[A]	[A]	[A]	[A]
100	20 - 25	16	10	6.3	100	
125	25 - 31.5	16	10	10	125	
160	31.5 - 50	20 - 25	16	10	160	
200	40 - 50	25 - 31.5	16	16	200	
250	50 - 63	31.5 - 40	16 - 25	16 - 20	315	
315	63 - 80	40 - 50	25	20 - 25	400	
400	80 - 100	50 - 63	25 - 31.5	25	450	
500	100 - 125	63 - 80	31.5 - 40	25 - 31.5	500	
630	125 - 160	80 - 100	40 - 50	31.5 - 40	630	
800	160	100 - 125	63	40 - 50	800	
1 000	160 - 200	125 - 160	63 - 80	40 - 50	1 000	

HHD Applications

**Protection of Transformers
Type B**

Recommendation for the protection of transformer mains with HHD fuse and using SIBA LV NH fuses* operating class gG/gL on the low voltage side.



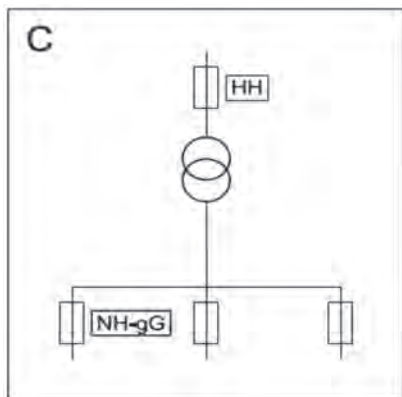
Transformer Rating	HV Fuse Selection Guide				Secondary Fusing with NH - gG/gL
	System Voltage(Line - Line) [kV]				
	6 - 7.2	10 - 12	20 - 24	30 - 36	
	Rated Current of Fuse				
[kVA]	[A]	[A]	[A]	[A]	[A]
50	10 - 16	10	6.3	4 - 6.3	63
100	20 - 31.5	16 - 20	10	6.3 - 10	125
125	25 - 40	20 - 25	10 - 16	10	160
160	31.5 - 50	20 - 31.5	16 - 20	10 - 16	200
200	40 - 63	25 - 40	16 - 20	16	250
250	50 - 80	31.5 - 50	20 - 25	16 - 20	315
315	63 - 100	40 - 50	20 - 25	20 - 25	400
400	80 - 100	50 - 80	25 - 40	20 - 25	500
500	100 - 125	63 - 80	31.5 - 50	25 - 31.5	630
630	125 - 160	80 - 125	40 - 63	31.5 - 40	800
800	160	100 - 125	63 - 80	40 - 50	1 000
1 000	160 - 200	125 - 160	63	40 - 50	1 250
1 250	250	160	80	50	-
1 600	2x160	200	100	63	-
2 000	2x200	250	125	2x40	-

***Use of the recommended HV fuses in connection with LV fuse of other manufacturers must be checked before installation.**

HHD Applications

**Protection of Transformers
Type C**

Recommendation for the protection of transformer mains with HHD fuses without a LV fuse on the low voltage side for overload protection of the transformer, individual cable exits are protected with LV fuse Inks operating class gL/gG.



Transformer Rating	HV Fuse Selection Guide				
	System Voltage(Line - Line) [kV]				
	6 - 7.2	10 - 12	15 - 17.5	20 - 24	30 - 36
	Rated Current of Fuse				
[kVA]	[A]	[A]	[A]	[A]	[A]
50	10 - 16	10	6.3 - 10	6.3	4 - 6.3
100	16 - 31.5	16 - 25	16	10	6.3 - 10
125	20 - 40	16 - 31.5	20	10 - 16	6.3 - 10
160	31.5 - 50	20 - 31.5	20 - 25	16 - 20	10 - 16
200	31.5 - 63	25 - 40	20 - 31.5	16 - 20	10 - 16
250	40 - 80	25 - 40	25 - 31.5	16 - 25	10 - 20
315	50 - 100	31.5 - 50	31.5	16 - 25	16 - 25
400	63 - 100	40 - 50	31.5 - 50	20 - 40	16 - 25
500	80 - 125	50 - 80	31.5 - 63	25 - 50	20 - 31.5
630	100 - 160	63 - 80	40 - 80	31.5 - 63	20 - 40
800	125 - 160	80 - 125	63 - 100	40 - 63	25 - 50
1 000	160 - 200	100 - 160	63 - 100	50 - 80	31.5 - 50
1 250	250	160	100	80	50
1 600	2x160	200	125	100	63
2 000	2x200	250	160	125	2x40